



Mercer+Mettle™ Stretch Soft Shell Jacket MM7102



Made from a sophisticated and supple double-weave fabric, this soft shell brings professional polish and weather-resistant performance together beautifully. The combination of refined style with a comfortable fit transitions seamlessly between home and office wear.

Fabric

- 92/8 poly/spandex
- 93/7 poly/spandex (Anchor Grey Heather)
- Durable water-repellent (DWR) finish

Features+Benefits

- 4-way stretch
- Exposed, molded zippers with metallic finish
- Matte black zipper pulls

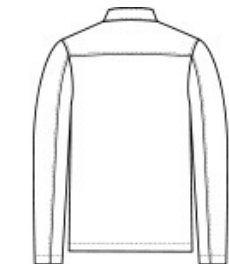
**

CARE INSTRUCTIONS

Turn Garment Inside Out. Machine Wash Cold With Like Colors. Do Not Use Fabric Softener Or Dryer Sheets. Do Not Bleach. Tumble Dry Low. Cool Iron If Necessary. Do Not Dry Clean.

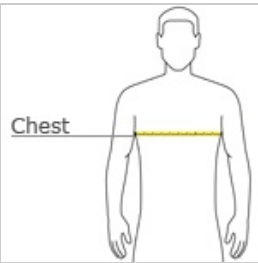


front



back

HOW TO MEASURE



CHEST WIDTH
Measure under the arm and around the fullest part of the chest with arms down, keeping tape horizontal.

SIZE CHART

	XS	S	M	L	XL	2XL	3XL	4XL
Chest	32-34	35-37	38-40	41-43	44-47	48-51	52-56	57-61

COLOR INFORMATION



Anchor Grey
Heather
PMS 426C



Deep Black
PMS Black C



Night Navy
PMS 532C